



Notebook Support List for the ECS-8582-4S



Purpose





This document lists the various laptops that have been tested with the ECS-8582-4S. There are several reasons that can cause incompatibility issues with the ECS-8582-4S, including defective hardware, driver conflicts, insufficient I/O resources, and BIOS incompatibility. Among these factors, BIOS incompatibility is the primary reason.

Many of our customers have inquired about which laptop to use with the ADLINK ECS-8582-4S. Therefore, we have tested several laptops on the market to provide a recommended laptop list to our users. ADLINK update this list at least every six months with new laptop models being tested.



Recommended Laptop List


The following laptops listed have passes our tests and are recommended for use with the ADLINK ECS-8582-4S.

Brand	Model	OS	Results	Date Tested
Lenovo	ThinkPad T60 (1951-I8V) 	Windows XP Pro SP3	Passed, no issues	Feb 2010
Sony	VGN-AR91S 	Windows XP Pro SP3	Passed, no issues	Feb 2010
Dell	Inspiron 6400 	Windows XP Pro SP3	Passed, no issues	Feb 2010
Fujitsu	FMV-BIBLO NB80L 	Windows XP Pro SP3	Passed, no issues	Feb 2010

Basic Test Procedure

In deployed applications, any laptop available on the market can potentially be used with the ECS-8582-4S. Because it is impractical to verify all compatibility with all laptops, ADLINK performs compatibility testing using an ADLINK DAQ-2010 PCI DAQ card with selected laptops.

PCI DAQ Card Information

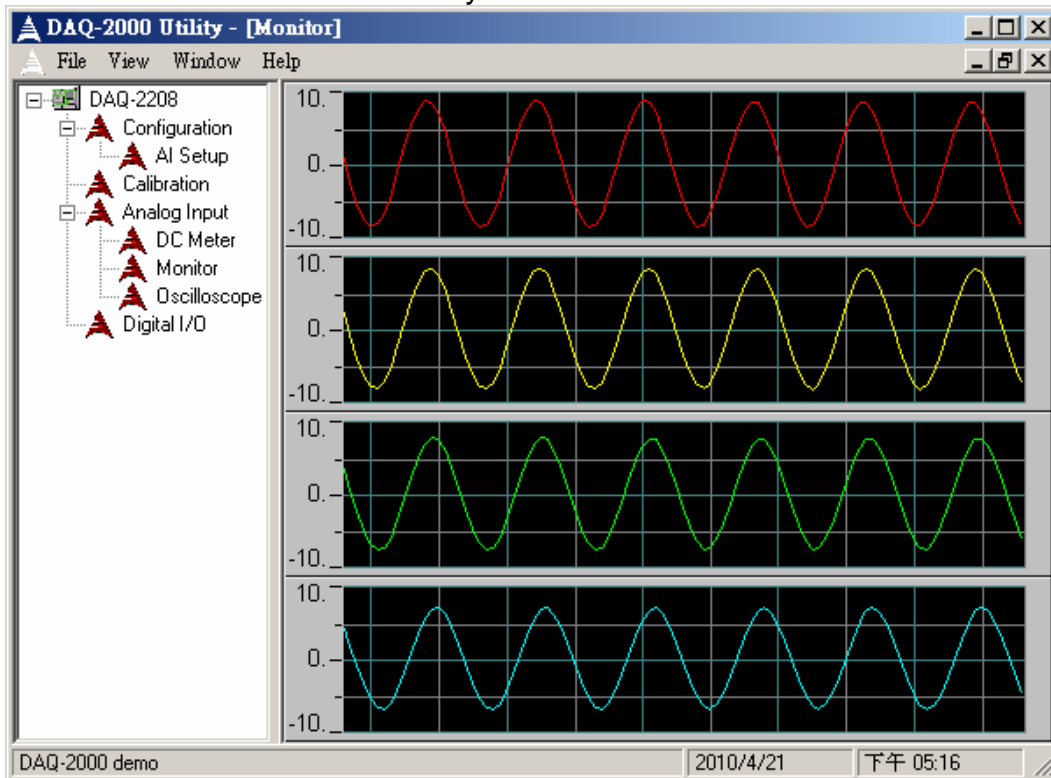
Model Name	Description	
DAQ-2010	4-CH 14-Bit 2 MS/s Simultaneous Sampling Multi-Function DAQ Card	
	Resource Requirement	
	Base Address 1	0xFF, I/O resource
	Base Address 2	0xFF, I/O resource
	IRQ	1

Test Setup

		
Notebook to be tested	ECS-8582-4S expansion system	Four DAQ-2010 cards

Test Program

D2K-DASK Calibration Utility – This utility controls, acquires, and displays data from the DAQ-2010. Functionality can be viewed when the DAQ-2010 is running.





Test Steps

1. Power on the laptop while the ECS-8582-4S is installed in the available ExpressCard slot.
2. Check the resource assignment on each DAQ card in Device Manager after the system boots.
3. Execute a DAQ card acquisition program. Acquire the external signal and transfer the data via DMA.
4. Unplug and plug-in the ECS-8582-4S at least five times and check if the DAQ cards still function properly.

If you have any further question about this test report, please contact your nearest ADLINK representative or visit:

http://www.adlinktech.com/contact_us/contactus.php?file=contactus.htm